



Surveillance Solutions

Safety and Security of People and Assets



Your ultimate connection

Overview	1
Analogue Cameras and Digital Video Recorders	
Analogue Cameras	
- TDF 796W / TDF 796G	5
- TDV 796W / TDV 796G	6
- TDV 796SSW	7
- TBF 796W / TBF 796G	8
- TBV 796W / TBV 796G	9
- TPTZ 796W	10
- TPTZ 79627W	11
Digital Video Recorder	
- 960H DVR - 4,8,16 Channel	12
HD TVI Cameras and THDR Video Recorders	
TVI Cameras	
- TDF 1.3TVIW	15
- TDV 1.3TVIW	16
- TDV 2TVIW	17
- TBF 1.3 TVIW	18
- TBV 2TVIW	19
- TPTZ MTVIW	20
- TPTZ TVWIR	21
THDR Video Recorder	
- THDR 4, 8, 16 Channel	22
IP Cameras	
- TDF IP (Matrix IR)	25
- TDV IP	26
- TBF IP	27
- TBV IP	28
- TPTZ IP	29
Accessories	
- Surveillance Hard Drives	31
- 3D Controller	32
- Power Extension DC Cable	32
- RG59 + 12VDC Cable	32
- Connectors and Tools	33
- Converters	34
- Power Supplies	34
- CCTV Tester / Analyser	35
- PTZ Mounts	35
- Miscellaneous	35
What we mean by...	37

Triax is a leading, international provider of innovative, high-tech solutions for the reception, processing and distribution of video, audio and data signals.



Triax provide a range of user friendly surveillance solutions to help ensure the safety and security of people and assets.

As well as an extensive selection of cameras, we also provide a comprehensive range of accessories plus DVR and THDR video recorders.

Technology

Triax surveillance solutions utilise the latest technology across the entire range.

Our entry level analogue solutions with 700TVL and 960H CCD image sensors, when combined with the 960H DVR series, offer a quality cost effective solution over a coaxial infrastructure.

All 960H cameras are available with fixed or varifocal lenses in dome or bullet housings which meet IP66 rating and comply to EN 62262 Impact Vandal Proof requirements.

IP 3MP Cameras offer the highest possible quality within our range. The cameras can be installed on existing networks and offer PoE which eliminates the need for local power.

HD TVI (High Definition Transmit Video Interface) is the latest technology which enables real time HD transmissions up to 1080P to be sent over long distances on the existing RG59 cable infrastructure. The new cameras offer 1.3 and 2MP resolutions which can be recorded on Triax Hybrid DVR's at 720P 25fps or 1080P 15fps and allow systems to be upgraded over time as they accept Analogue, TVI and IP camera support.

High in quality but not price, we understand that cost of ownership is paramount for all business sectors. Our range has been designed to suit all budgets while utilising the latest technology to create reliable solutions with minimal installation and maintenance.

Where to use

Many sectors can benefit from using Triax surveillance systems, for example, housing associations, care homes, hotels, hospitality, healthcare and educational facilities.

Fixed / Varifocal Dome

Public Areas - Reception, Corridors, Offices, Retail, Schools and Colleges, Home, Banks, Cash Point Surveillance, Pubs, Clubs



Fixed / Varifocal Bullet

Entry doors, Emergency Exits, Ambulance A&E Entrances, Schools and Colleges



TVI + IP Cameras

Public areas where HD images and recording are required - Warehouses, Offices, Colleges, Retail Centres, Airports, Football Stadia, Concert Halls



PTZ

Car parks and Grounds, Perimeter Detection, Retail Shopping Centres, Colleges, Universities, Local Authorities, Industry





Healthcare

Video surveillance can play a key role in today's healthcare environment, ensuring the protection and wellbeing of staff and patients alike.

Installing a high quality surveillance system can give peace of mind by creating reliable, cost effective solutions requiring minimal maintenance and the ability to utilise existing cable infrastructures.

For this sector we offer complete end to end video surveillance solutions ranging from Analogue 960H to 3MP IP cameras - all with real-time monitoring via the latest DVR's at a price to meet all budgets.

Housing Associations, Care homes, Residential homes, Local Authority sheltered accommodation

Triax high quality CCTV surveillance cameras can help protect staff, tenants and property. With robust IP66 housings that comply to EN 62262 Impact Vandal Proof requirements - PTZ, Fixed and Varifocal Cameras can securely monitor activity, property, entrances and public places to help create a safe and secure living environment.

Hotels and Hospitality

With the latest innovative Triax technology, the next generation of surveillance equipment creates a relaxed and secure environment for staff and guest wellbeing. Our solutions can be installed using existing infrastructure, minimising disruption and maintaining occupancy rates.

We offer four solutions depending on requirements.

- The latest 960H Analogue 700TVL Cameras are well suited to low light levels where a wide angle of view is required, eg, Receptions and Restaurants.
- Varifocal Cameras allow focus / zoom on specific areas, eg, Emergency Exits, Entrances.
- TVI Cameras offer superior image quality and recordings for all applications.
- 3MP IP Cameras offer outstanding image quality and recordings.

At a glance

	Analogue	HD TVI	IP
Resolution (TX5012)	960H (700TVL)	720P / 1080P	n/a
Coax Twin Cable (TX5912)	180 / 300m	300m	n/a
Cat5e Cabling	Extra Cabling	200m	100m
Transmit RS 485	Extra Cabling	Yes	Yes
720P Frame Rate	n/a	25/30 fps	25/30 fps
1080P Frame Rate	n/a	15/25 fps	25/30 fps
DVR Recording	CIF / D1 / WD1	Combination 720P and 1080P	n/a
Supports 3, 4, 5 MP	n/a	n/a	Yes
DVR Combination using both 720P and 1080P Camera	n/a	Yes	Yes

The HD-TVI Advantage



HD-TVI (High Definition Transmit Video Interface)

Is High Efficiency, Long Distance, Real-Time Transmission over both general coax cable and network cable HD video transmission. The technology renders two HD video formats 1080P (1920x1080) and 720P (1280x720)



HD-TVI - The Benefits

- High video quality on HD 720P and 1080P
- Transmit video signal, audio signal and bi-directional data communication signal over one coaxial cable
- HD video transmission without video quality loss or delay
- Long transmission distance
- The same BNC connection structure as current analogue systems utilising existing coax cabling infrastructure or UTP cables (with converters)

HD-TVI - Technology

TVI technology can transmit the high-definition picture quality (720P/1080P), Audio and RS 485 control over standard coaxial cable and all network cable.

HD-TVI - The Advantages

- ✓ **High Resolution**
 - 720P / 1080P
 - No signal drop
 - High picture quality with no delay
- ✓ **Transmit multiple signals over one cable**
 - Video / Audio
 - RS 485
- ✓ **Long distance Cabling**
 - 720P / 1080P over coaxial cable
 - RG59 75Ω more than 300 metres (984ft)
 - RG6 upto 500 metres (1640ft)
 - All network cable 200 metres (656ft)
 - Live view no delay issue
 - High signal transmission with no video loss
- ✓ **Compatibility**
 - TVI is compatible with all TVI chipsets
- ✓ **Save costs**
 - Uses existing wiring infrastructure (Coax Cat5/6/7)





Analogue Cameras and Digital Video Recorders



TDF 796W TDF 796G



700 TVL 960H CCD
Fixed Dome Camera

Part No. 301000 - White

Part No. 301001 - Grey

- 700 TVL
- 1/3" Sony 960H CCD
- IP66 Weather Proof
- 3.6mm Lens
- 24 IR LED's 21m (70ft)
- Aluminium Housing
- DC 12V (Not Supplied)



Features

- **High Resolution**
700 TVL horizontal resolution, 960H CCD Technology.
- **Long Life IR LED Design**
Enhanced High performance IR LED's with brightness several times higher and a greater life expectancy than standard IR LED's.
- **Auto D/N Switchover Operating Mode**
When there is sufficient daylight the 700 TVL, 960H High performance camera operates in colour mode. At low light levels the camera automatically switches using the Smart IR functionality to black and white ensuring high quality images over 21m (70ft).
- **Product Protection**
IP66 weather proof with vandal resistant aluminium housing.

Specifications

Camera

Image Sensor	1/3" Sony 960H CCD
Signal System	PAL
Effective Pixels	PAL: 976 (H) x 582 (V)
Min. Illumination	Colour:> 0.3 Lux, B&W: 0 Lux
Shutter Speed	PAL: 1/50s ~ 1/100,000s
Lens	3.6mm
Day & Night	Auto
White Balance	Auto Tracking White Balance
BLC	Auto
Auto Gain Control	Auto
Synchronization	Internal Synchronization
Horizontal Resolution	Used with Triax Compatible 960H DVR's 700 TVL 960H WDI Compatible
S/N Ratio	52dB (AGC off)
Video Output	1 BNC, 1.0 Vp-p, 75Ohm Composite
Smart IR	Yes

General

Working Temperature / Humidity	-10°C ~ 50°C / 14°F ~ 122°F Humidity 90% or less (non-condensing)
Power Supply	DC 12V (Not Supplied)
IR LEDs	24 pcs
IR Distance	21m (70ft)
Weather Proof Rating	IP66
Dimensions	Φ94mm x 80mm (Φ3.7" x 3.1")
Weight	330g (0.73lb)



TDV 796W

TDV 796G



700 TVL 960H CCD
Varifocal Dome Camera

Part No. 301002 - White

Part No. 301003 - Grey



- 700 TVL
- 1/3" Sony 960H CCD
- IP66 Weather Proof
- 2.8 - 12mm Lens
- 36 IR LED's 30m (100ft)
- Aluminium Housing
- DC 12V (Not Supplied)

Features

- **High Resolution**
700 TVL horizontal resolution, 960H CCD Technology.
- **Long Life IR LED Design**
Enhanced High performance IR LED's with brightness several times higher and a greater life expectancy than standard IR LED's.
- **Auto D/N Switchover Operating Mode**
When there is sufficient daylight the 700 TVL, 960H High performance camera operates in colour mode. At low light levels the camera automatically switches using the Smart IR functionality to black and white ensuring high quality images over 30m (100ft).
- **Product Protection**
IP66 weather proof with vandal resistant aluminium housing.

Specifications

Camera

Image Sensor	1/3" Sony 960H CCD
Signal System	PAL
Effective Pixels	PAL: 976 (H) x 582 (V)
Min. Illumination	Colour:> 0.3 Lux, B&W: 0 Lux
Shutter Speed	PAL: 1/50s ~ 1/100,000s
Lens	2.8 ~ 12mm
Day & Night	Auto
White Balance	Auto Tracking White Balance
BLC	Auto
Auto Gain Control	Auto
Synchronization	Internal Synchronization
Horizontal Resolution	Used with Triax Compatible 960H DVR's 700 TVL 960H WDI Compatible
S/N Ratio	52dB (AGC off)
Video Output	1 BNC, 1.0 Vp-p, 75Ohm Composite
Smart IR	Yes

General

Working Temperature / Humidity	-10°C ~ 50°C / 14°F ~ 122°F Humidity 90% or less (non-condensing)
Power Supply	DC 12V (Not Supplied)
IR LEDs	36 pcs
IR Distance	30m (100ft)
Weather Proof Rating	IP66
Dimensions	Φ120mm x 100mm (Φ4.7" x 3.9")
Weight	730g (1.6lb)



700 TVL 960H CCD
Varifocal Starlight Sensing Dome Camera

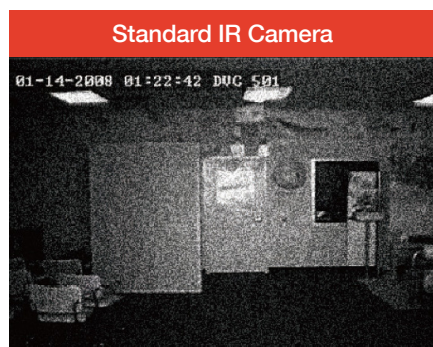
Part No. 301013 - White

- 700 TVL
- 1/3" Sony 960H CCD
- IP66 Weather Proof
- 2.8 - 12mm Lens
- 3D DNR, Starlight Sensing
- 3-Axis, OSD Menu
- Aluminium Housing
- DC 12V (Not Supplied)

Great for
pubs and
clubs



Starlight with Sens-up
Technology provides clear
images in low light environments



Specifications

Camera	
Image Sensor	1/3" Sony 960H CCD
Signal System	PAL
Effective Pixels	PAL: 976 (H) x 582 (V)
Min. Illumination	0.001 Lux
Shutter Speed	PAL: 1/50s ~ 1/100,000s
Lens	2.8 ~ 12mm
Day & Night	Auto
White Balance	Auto Tracking White Balance
BLC	Auto
Auto Gain Control	Auto
Synchronization	Internal Synchronization
Digital Noise Reduction	3D DNR
General	
Working Temperature / Humidity	-10°C ~ 50°C / 14°F ~ 122°F Humidity 85% or less (non-condensing)
Power Supply	DC 12V (Not Supplied)
Weather Proof Rating	IP66
Dimensions	Φ140mm x 140mm x 107mm (Φ5.5" x 5.5" x 4.2")
Weight	840g (1.9lb)



TBF 796W TBF 796G



700 TVL 960H CCD
IR Fixed Bullet Camera

Part No. 301004 - White

Part No. 301005 - Grey

- 700 TVL
- 1/3" Sony 960H CCD
- IP66 Weather Proof
- 3.6mm Lens
- 24 IR LED's 15m (50ft)
- Aluminium Housing
- DC 12V (Not Supplied)



Features

THIS CCTV COLOUR SENSOR CAMERA Introduces advanced sensor and digital technology, enabling a high quality image.

- Hi-Resolution colour sensor image resolution.
- High image quality and ultra low light performance.
- Plug the Video signal into any DVR, VCR, TV or security monitor.
- The high performance digital-processing chip greatly improves the signal-to-noise ratio and distortion.
- Automatic white balance enables the camera to produce correct and natural colours in any light conditions, indoor or outdoor, by automatically adjusting the white balance point.
- The illumination distance referred to in this manual is indoor night view distance. The infrared transmission will be affected if there is high humidity or smoke in the air. In this situation the viewable distance will be shortened and the night view will be reduced when the objects are lawn, trees or anything without reflecting ability.
- This chip features a field period readout system and an electronic shutter with variable charge-storage time.

Specifications

Camera

Image Sensor	1/3" Sony 960H CCD
Signal System	PAL
Effective Pixels	PAL: 976 (H) x 582 (V)
Min. Illumination	Colour:> 0.3 Lux, B&W: 0 Lux (IR LED On)
Shutter Speed	PAL: 1/50s ~ 1/100,000s
Lens	3.6mm
Day & Night	Auto
White Balance	Auto Tracking White Balance
BLC	Auto
Auto Gain Control	Auto
Synchronization	Internal Synchronization
Horizontal Resolution	700 TVL, 960H Resolution
S/N Ratio	More than 50dB (AGC off)
Video Output	1 BNC, 1.0 Vp-p, 75 Ohm Composite

General

Working Temperature / Humidity	-10°C ~ 50°C / 14°F ~ 122°F Humidity 85% or less (non-condensing)
Power Supply	DC 12V (Not Supplied)
Power Consumption	< 2W (LED Off) / < 6W (LED On)
IR LEDs	24 pcs
IR Distance	15m (50ft)
Weather Proof Rating	IP66
Dimensions	60 x 150 x 80mm (2.7 x 5.9 x 3.1")
Weight	300g (0.66lb)



TBV 796W

TBV 796G



700 TVL 960H CCD
IR Varifocal Bullet Camera

Part No. 301006 - White

Part No. 301007 - Grey

- 700 TVL
- 1/3" Sony 960H CCD
- IP66 Weather Proof
- 2.8-12mm Lens
- 42 IR LED's 36m (120ft)
- Aluminium Housing
- DC 12V (Not Supplied)



Features

THIS CCTV COLOUR SENSOR CAMERA Introduces advanced sensor and digital technology, enabling a high quality image.

- Hi-Resolution colour sensor image resolution.
- High image quality and ultra low light performance.
- Plug the Video signal into any DVR, VCR, TV or security monitor.
- The high performance digital-processing chip greatly improves the signal-to-noise ratio and distortion.
- Automatic white balance enables the camera to produce correct and natural colours in any light conditions, indoor or outdoor, by automatically adjusting the white balance point.
- The illumination distance referred to in this manual is indoor night view distance. The infrared transmission will be affected if there is high humidity or smoke in the air. In this situation the viewable distance will be shortened and the night view will be reduced when the objects are lawn, trees or anything without reflecting ability.
- This chip features a field period readout system and an electronic shutter with variable charge-storage time.

Specifications

Camera	
Image Sensor	1/3" Sony 960H CCD
Signal System	PAL
Effective Pixels	PAL: 976 (H) x 582 (V)
Min. Illumination	Colour:> 0.3 Lux, B&W: 0 Lux
Shutter Speed	PAL: 1/50s ~ 1/100,000s
Lens	2.8 - 12mm
Day & Night	Auto
White Balance	ATW
BLC	Auto
Auto Gain Control	Auto
Synchronization	Internal Synchronization
Horizontal Resolution	700 TVL 960H Resolution
S/N Ratio	52dB (AGC off)
Video Output	1 BNC, 1.0 Vp-p, 75 Ohm Composite
General	
Working Temperature / Humidity	-10°C ~ 50°C / 14°F ~ 122°F Humidity 90% or less (non-condensing)
Power Supply	DC 12V (Not Supplied)
IR LEDs	42 pcs
IR Distance	36m (120ft)
Weather Proof Rating	IP66
Dimensions	256 x 94 x 150mm (10.1 x 3.7 x 5.9")
Weight	1000g (2.2lb)



TPTZ 796W

700 TVL Analog PTZ Dome Camera



Part No. 301008

- 700 TVL Horizontal Resolution
- 1/3" Sony 960H CCD Sensor
- IP66 Weather Proof
- DWDR & 3D DNR & BLC
- 3.8 - 45.6mm Lens, 12 x Optical Zoom
- 3D Intelligent Positioning
- Alarm I/O



Specifications

Camera

Image Sensor	1/3" Sony 960H CCD
Effective Pixel	NTSC: 976(H) x 494(V) PAL: 976(H)x582(V)
Horizontal Resolution	Colour: 700TVL / B/W: 750TVL
Min. Illumination	Colour: 0.1 Lux@F1.6 (AGC On) B/W 0.01 Lux with IR (AGC On)
White Balance	Auto/ATW/Indoor/Outdoor/One Push
AGC	Auto / Manual
S/N Ratio	≥ 50dB
Dig. Noise Reduction	3D DNR
Backlight Comp.	Yes
Wide Dynamic Range	Digital WDR
Shutter Speed	NTSC: 1/60s ~ 1/10,000s PAL: 1/50s ~ 1/10,000s
Day & Night	IR Cut Filter
Digital Zoom	16X
Privacy Mask	8 Programmable Masks Optional Multiple Colours and Mosaics
Focus Model	Auto / Semiautomatic / Manual

Lens

Focal Length	3.8 ~ 45.6mm 12X
Zoom Speed	Approx .2s (Optical Wide-Tele)
Angle of View	50.69 ~ 4.5 Degree (Wide-Tele)
Min. Working Dist.	10 ~ 1500mm (Wide-Tele)
Aperture Range	F1.6 ~ F2.7

Pan and Tilt

Pan / Tilt Range	Pan range: 360° endless; Tilt range: -2°-90°(Auto Flip)
Pan / Tilt Speed	Pan Manual Speed: 0.1° -200°/s, Pan Preset Speed: 200°/s Tilt Manual Speed: 0.1°-120°/s, Tilt Preset Speed: 120°/s
Proportional Zoom	Rotation speed can be adjusted automatically according to zoom multiples
Number of Preset	256
Patrol	8 patrols, up to 32 presets per patrol

Pattern	4 patterns, with the total recording time not less than 10 minutes
Power Off Memory	Support
Park Action	Preset / Patrol / Pattern / Pan scan / Tilt scan / Random scan / Frame scan / Panorama scan
PTZ Position Display	Support
Zone Scanning /Display	Scanning within programmed zone, display zone title
Camera Title	Programmable title display
Compass	Support , the north can be set
Scheduled Task	Preset / Patrol / Pattern / Pan scan / Tilt scan / Random scan / Frame scan / Panorama scan
RS-485 Communication Diagnosis	Including failure information, e.g., wrong address, baud rate errors, et., displayed on the video screen in text
Manchester Code Communication Diagnosis	Including failure information, e.g., wrong address, baud rate errors s displayed on the video screen in special characters

Alarm Input / Output

Alarm Input	2
Alarm Output	1 Relay output, alarm response configurable
Alarm Action	Preset / Patrol / Pattern / Pan scan / Tilt scan / Random scan / Frame scan / Panorama scan / Relay output

Local Output

Video Output	1.0V[p-p] / 75Ω, NTSC (or PAL) composite, BNC
--------------	-----------------------------------------------

General

Working Temperature / Humidity	-30°C ~ 65°C / -22°F ~ 149°F Humidity 95% or less (non-condensing)
Power Supply	24 VAC, Max 18W
RS-485 Protocols	HIKIVISION, Pelco-P, Pelco-D, Self Adaptive
Humidity	90% or less
Protection Level	IP66, TVS 4,000V Lightning protection, surge protection and voltage transient protection
Dimensions	φ180 x 239.5mm (7.08 x 9.43 w/o Bracket")
Weight	Approx. 2000g (4.4lb w/o Bracket)



700TVL 27xOptical Zoom Analogue PTZ Dome Camera

Part No. 301009

- 700TVL Horizontal Resolution
- 1/3" Sony 960H CCD Sensor
- IP66 Weather Proof
- True Day/Night DWDR & DNR
- 27 x Optical Zoom, 16 x Digital Zoom
- 3D Intelligent Positioning
- 6 IR LED's 100m (330ft)
- 24VAC Power Supply



Specifications

Camera

Image Sensor	1/3" Sony 960H CCD
Effective Pixel	976 (H) x 494 (V)
Min. Illumination	Colour: 0.02 Lux@F1.6 (AGC On) B/W 0.001 Lux@F1.6 with IR (AGC On) 0 Lux with IR
White Balance	Auto/Manual/ATW/Indoor/Outdoor
AGC	Auto / Manual
S/N Ratio	≥ 50dB
Dig. Noise Reduction	DNR
Wide Dynamic Range	128X Digital WDR
Shutter Speed	1 ~ 1/10,000s
Day & Night	IR Cut Filter
Digital Zoom	16x
Privacy Mask	Up to 8 zones, max 8 zones on same image, multiple colours and mosaics optional
Focus Mode	Auto / Semiautomatic / Manual

Lens

Focal Length	4 ~ 108mm 27X
Zoom Speed	Approx 4s (Optical Wide-Tele)
Angle of View	57.58 ~ 3.12 Degree (Wide-Tele)
Min. Working Dist.	10 ~ 1000mm (Wide-Tele)
Aperture Range	F1.6 ~ F3.7

Pan and Tilt

Pan / Tilt Range	Pan range: 360° endless; Tilt range: -15°-90° (Auto Flip)
Pan / Tilt Speed	Pan Manual Speed: 0.1°-160°/s, Pan Preset Speed: 240°/s Tilt Manual Speed: 0.1°-120°/s, Tilt Preset Speed: 200°/s

Proportional Zoom	Rotation speed can be adjusted automatically according to zoom multiples
Number of Preset	256
Patrol	8 patrols, up to 32 presets per patrol
Pattern	4 Patterns with total recording time not less than 10 minutes
Power Off Memory	Support
Park Action	Preset / Patrol / Pattern / Pan / Tilt / Auto Random / Frame / Panorama
PTZ Position Display	On / Off
Compass	Support, North can be set
Schedule Task	Preset / Patrol / Pattern / Pan / Tilt / Auto Random / Frame / Panorama

Infrared

IR Distance	Up to 100m (330ft)
IR Intensity	Automatically adjust depending on the zoom ratio

Input / Output

Video Output	1.0V (P-P) / 75Ω, BNC
--------------	-----------------------

General

Working Temperature	-30°C ~ 65°C / -22°F ~ 149°F
Power Supply	24 VAC, Max 30W (IR On, Heater On), Max 24W (IR On), Max 15W (IR Off, Heater Off)
RS-485 Protocols	HIKIVISION, Pelco-P, Pelco-D, Self Adaptive
Humidity	90% or less
Protection Level	IP66, TVS 4,000V Lightning protection, surge protection and voltage transient protection
Dimensions	φ245 x 399mm (9.65" x 15.71" w/o Bracket)
Weight	Approx. 5.5kg (12.13lb w/o Bracket)





960H DVR

4 / 8 / 16 Channel CCTV WD1
Digital Video Recorder

TR 496 Part No. 301010
TR 896 Part No. 301011
TR 1696 Part No. 301012

Motion Detection

Mark a specific area that needs extra protection. Any activity in that area can trigger alarm and analytic algorithms to prevent false positives. A simple line can also be drawn and set up as the alarm trigger.

- Real-Time High Resolution Recording
- Supports WD1 Recording
- Synchronous Playback
- H.264 Compression Technology
- Mobile Surveillance via downloadable app
- Audio Input / Output
- Remote Monitoring / Control via CMS or Web Browsers
- HDD Quota and Group Management
- HDMI Output
- Alarm on all Inputs & 1 CH Alarm Output

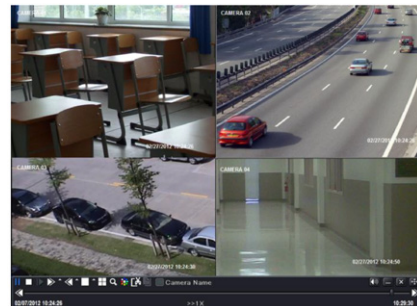
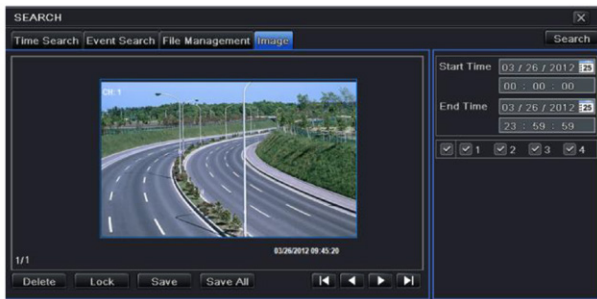


Download the mobile
surveillance app

Featuring P2P Technology

- Easily setup remote viewing via QR code
- Eliminates complicated setup via router





Specifications

System	4 Channel	8 Channel	16 Channel
Compression Format	Standard H.264 Height Profile		
OS	Embedded Linux		
Video			
Input	4CH, BNC (1.0Vp-p, 75Ω)	8CH, BNC (1.0Vp-p, 75Ω)	16CH, BNC (1.0Vp-p, 75Ω)
Standard Output	1 VGA; 1920x1080, 1280x1024, 800x600, 1 BNC+1 Spot Out		
Advanced Output	1 HDMI: 1080P: 1920x1080/60Hz		
Audio			
Audio Input	4CH, RCA (2.0Vp-p, 75Ω)		
Audio Output	1CH, RCA (Linear, 1kΩ)		
Bidirectional Talk	1-CH, RCA (2.0Vp-p, 1kΩ)(using 1ch Audio Input)		
Alarm			
Alarm In / Out	4CH / 1CH	8CH / 1CH	16CH / 1CH
Recording			
960H	25 fps		
D1	25 fps		
CIF	25 fps		
Recording Mode	Schedule, Manual, Motion, Sensor		
Playback			
Max Playback Channel	4CH	8CH	16CH
Search Mode	Time, Event, File		
Backup			
USB Disk	USB 2.0 or SATA		
Remote Application			
Dual Stream	Support; Master Stream, Sub-Stream@ WD1/D1/CIF		
Browser	IE (Windows), Safari (Mac OS), Chrome, Firefox		
CMS	Yes		
Mobile Phone	Broview App for Apple / Android OS		
User Access	10 Users Online with professional authority management		
Storage			
HDD	1 x SATA 3TB HDD		
PTZ			
PTZ	1 RS-485 Interface, Half-Duplex		
PTZ Control	Pan, Tilt, Zoom, Preset, Cruise, Trace		
PTZ Protocol	Multiple PTZ Protocols supported		
Network			
Ethernet	1 RJ45 10M / 100M Ethernet Interface		
Protocol	TCP/IP, UDP, DHCP, DNS, PPPoE, DDNS, Email		
General			
Power Supply	DC12V 2A		
Consumption	≤10W (without hard disk or DVD-R/W)		
Operating Temperature	0°C ~ 50°C		
Humidity	10% - 90% Humidity		
Dimensions (W x H x D)	300 x 278 x 58mm		



HD TVI Cameras and THDR Video Recorders



A decorative background with a blue and white digital theme. It features various icons and text labels for camera features:

- IP66 WEATHERPROOF
- HD VIDEO
- MICRO SD CARD SLOT
- 3.0 Megapixel CAMERA RESOLUTION
- PROGRESSIVE SCAN
- I/O ALARM
- 1/3" 960H CCD
- H.264 CO
- VARIFOCAL
- DIGITAL NOISE REDUCTION
- WIDE DYNAMIC RANGE
- 3D INTELLIGENT POSITIONING
- POWER LOSS RECOVERY
- INFRA RED CUT FILTER REMOVAL
- PAT
- 2.0 Megapixel CAMERA SOLUTION

TDF 1.3TVIW

TVI Series Fixed Dome Camera



Part No. 301020

- HD 720p 1.3 MP Video Resolution
- 28 IR LED's 20m (65ft)
- IP66 Weather Proof
- 2D and 3D DNR & BLC
- 3.6mm Lens
- Aluminium Housing
- DC 12V (Not Supplied)



Features

- **High Resolution - HD 720p 1.3MP video resolution**
- **High quality 3.6mm fixed lens**
- **HD TVI- High Definition Transmit Video Interface**
This technology enables a high efficiency of real time HD transmissions over long distances using standard RG59 (TX5912 cable). The technology supports two HD video formats 1920x1080 (1080p) and 1280x720 (720p).
- **DNR**
Employing the latest digital noise reduction technology which enables noise to be filtered even more effectively from the image whatever the light conditions.
- **Auto D/N switchover Operation Mode**
When there is sufficient daylight the TVI range of cameras operate in colour mode. At low light (lux) level the camera automatically switches using the Smart IR functionality to black and white ensuring high quality images over 20m (65ft).
- **Product Protection**
IP66 weather proof vandal resistant aluminium housing.

Specifications

Camera

Image Sensor	1/3"
Signal System	PAL
Effective Pixels	PAL: 1280 (H) x 720 (V)
Min. Illumination	0 Lux (Infrared Lamps On)
Shutter Speed	PAL: 1/25s ~ 1/50,000s
Lens	3.6mm Mega Pixel Lens
Day & Night	ICR
White Balance	Auto Tracking White Balance
BLC	Auto
Auto Gain Control	Auto
Synchronization	Internal Synchronization
S/N Ratio	50dB (AGC off)
Digital Noise Reduction	2D DNR & 3D DNR
Smart IR	Yes

General

Working Temperature / Humidity	-40°C ~ 60°C / -40°F ~ 140°F RH 85% or less (non-condensing)
Power Supply	DC 12V (Not Supplied)
IR LEDs	28 pcs
IR Distance	20m (65ft)
Weather Proof Rating	IP66
Dimensions	Φ93mm x 62mm (Φ3.7" x 2.4")
Weight	400g (0.9lb)



TDV 1.3TVIW

TVI Series Varifocal Dome Camera



Part No. 301021

- HD 720p 1.3 MP Video Resolution
- IP66 Weather Proof
- 2D and 3D DNR & BLC
- 24 IR LED's 20m (65ft)
- 2.8 - 12mm Varifocal Lens
- Aluminium Housing
- DC 12V (Not Supplied)



Features

- **High Resolution - HD 720p 1.3MP video resolution**
- **High quality 2.8 - 12mm varifocal lens**
- **HD TVI- High Definition Transmit Video Interface**
This technology enables a high efficiency of real time HD transmissions over long distances using standard RG59 (TX5912 cable). The technology supports two HD video formats 1920x1080 (1080p) and 1280x720 (720p).
- **DNR**
Employing the latest digital noise reduction technology which enables noise to be filtered even more effectively from the image whatever the light conditions.
- **Auto D/N switchover Operation Mode**
When there is sufficient daylight the TVI range of cameras operate in colour mode. At low light (lux) level the camera automatically switches using the Smart IR functionality to black and white ensuring high quality images over 20m (65ft).
- **Product Protection**
IP66 weather proof vandal resistant aluminium housing.

Specifications

Camera

Image Sensor	1/3"
Signal System	PAL
Effective Pixels	PAL: 1280 (H) x 720 (V)
Min. Illumination	0.01 Lux@(F1.2, AGC ON), 0 Lux with Infrared Lamps On)
Shutter Speed	PAL: 1/25s ~ 1/50,000s
Lens	2.8-12mm @ F1.4, Angle of View: 80° - 27.2°
Lens Mount	Φ14
Angle Adjustment	Pan: 0-360°, Tilt: 0-75°, Rotation: 0-360°
Day & Night	ICR
White Balance	Auto Tracking White Balance
Synchronization	Internal Synchronization
S/N Ratio	More than 52dB
Video Frame Rate	720p@25fps/720p@30fps
HD Video Output	1 Turbo HD Output
Digital Noise Reduction	2D DNR & 3D DNR
Smart IR	Yes

General

Working Temperature / Humidity	-40°C ~ 60°C / -40°F ~ 140°F RH 90% or less (non-condensing)
Power Supply	DC 12V (Not Supplied)
IR LEDs	24 pcs
IR Distance	20m (65ft)
Weather Proof Rating	IP66
Dimensions	Φ130.54mm x 102.4mm (Φ5.1" x 4.0")
Weight	565g (1.24lb)



TDV 2TVIW

TVI Series Varifocal Dome Camera



Part No. 301022

- HD 1080p 2MP Video Resolution
- 36 IR LED's 30m (100ft)
- IP66 Weather Proof
- 2D and 3D DNR & BLC
- 2.8 - 12mm Varifocal Lens
- Aluminium Housing
- DC 12V (Not Supplied)



Features

- **High Resolution- HD 1080p 2MP video resolution**
- **High quality 2.8-12mm Varifocal lens Dome Camera**
- **HD TVI- High Definition Transmit Video Interface**
This technology enables a high efficiency of real time HD transmissions over long distances using standard RG59 (TX5912 cable). The technology supports two HD video formats 1920x1080 (1080p) and 1280x720 (720p).
- **DNR**
Employing the latest digital noise reduction technology which enables noise to be filtered even more effectively from the image whatever the light conditions.
- **BLC- Back Light Compensation**
A feature that enables detail to be seen in otherwise dark or shadowed areas where silhouetting would otherwise occur.
- **Auto D/N switchover Operation Mode**
When there is sufficient daylight the TVI range of cameras operate in colour mode. At low light (lux) level the camera automatically switches using the Smart IR functionality to black and white ensuring high quality images over 30m (100ft).
- **Product Protection**
IP66 weather proof vandal resistant aluminium housing.

Specifications

Camera

Image Sensor	1/2.8"
Signal System	PAL
Effective Pixels	PAL: 1920 (H) x 1080 (V)
Min. Illumination	0 Lux (Infrared Lamps On)
Shutter Speed	PAL: 1/25s ~ 1/50,000s
Lens	2.8 - 12mm Mega Pixel Lens
Day & Night	ICR
White Balance	Auto Tracking White Balance
BLC	Auto
Auto Gain Control	Auto
Synchronization	Internal Synchronization
S/N Ratio	50dB (AGC off)
Digital Noise Reduction	2D DNR & 3D DNR
Smart IR	Yes

General

Working Temperature / Humidity	-10°C ~ 50°C / 14°F ~ 122°F RH 85% or less (non-condensing)
Power Supply	DC 12V (Not Supplied)
IR LEDs	36 pcs
IR Distance	30m (100ft)
Weather Proof Rating	IP66
Dimensions	Φ139mm x 105mm (Φ5.5" x 4.1")
Weight	710g (1.5lb)



TBF 1.3TVIW

TVI Series Fixed Bullet Camera



Part No. 301023

- HD 720p 1.3MP Video Resolution
- 24 IR LED's 20m (65ft)
- IP66 Weather Proof
- DNR & BLC
- 3.6mm Fixed Lens
- Aluminium Housing
- DC 12V (Not Supplied)



Features

- **High Resolution- HD 720p 1.3MP video resolution**
- **High quality 3.6mm Fixed lens Bullet Camera**
- **HD TVI- High Definition Transmit Video Interface**
This technology enables a high efficiency of real time HD transmissions over long distances using standard RG59 (TX5912 cable). The technology supports two HD video formats 1920x1080 (1080p) and 1280x720 (720p).
- **DNR**
Employing the latest digital noise reduction technology which enables noise to be filtered even more effectively from the image whatever the light conditions.
- **BLC- Back Light Compensation**
A feature that enables detail to be seen in otherwise dark or shadowed areas where silhouetting would otherwise occur.
- **Auto D/N switchover Operation Mode**
When there is sufficient daylight the TVI range of cameras operate in colour mode. At low light (lux) level the camera automatically switches using the Smart IR functionality to black and white ensuring high quality images over 20m (65ft).
- **Product Protection**
IP66 weather proof vandal resistant aluminium housing.

Specifications

Camera

Image Sensor	1/3"
Signal System	PAL
Effective Pixels	PAL: 1280 (H) x 720 (V)
Min. Illumination	0.01 Lux@(F1.2, AGC ON) 0 Lux (Infrared Lamps On)
Shutter Speed	PAL: 1/25s ~ 1/50,000s
Lens	3.6mm Lens, Angle of View: 76.88°
Day & Night	ICR
White Balance	Auto Tracking White Balance
BLC	Auto
Auto Gain Control	Auto
Synchronization	Internal Synchronization
S/N Ratio	More than 52dB
Digital Noise Reduction	Yes
HD Video Output	1 Analog HD output

General

Working Temperature / Humidity	-40°C ~ 60°C / -40°F ~ 140°F RH 85% or less (non-condensing)
Power Supply	DC 12V (Not Supplied)
Power Consumption	Max. 3.5W
IR LEDs	24 pcs
IR Distance	20m (65ft)
Weather Proof Rating	IP66
Dimensions	Φ70mm x 149.5mm (Φ2.8" x 5.9")
Weight	360g (0.8lb)



TBV 2TVIW

TVI Series Varifocal Bullet Camera



Part No. 301024

- HD 1080p 2MP Video Resolution
- True Day/Night
- IP66 Weather Proof
- 120dB True WDR, 3D DNR & Smart IR
- Matrix IR Illumination 50m (165ft)
- OSD Menu via UTC Technology
- 2.8 - 12mm Varifocal Lens
- Aluminium Housing
- DC 12V (Not Supplied)



Features

- High Resolution- HD 1080p 2MP video resolution
- High quality 2.8-12mm Varifocal lens Bullet Camera
- Matrix IR

HD TVI- High Definition Transmit Video Interface
This technology enables a high efficiency of real time HD transmissions over long distances using standard RG59 (TX5912 cable). The technology supports two HD video formats 1920x1080 (1080p) and 1280x720 (720p).

DNR
Employing the latest digital noise reduction technology which enables noise to be filtered even more effectively from the image whatever the light conditions.

BLC- Back Light Compensation
A feature that enables detail to be seen in otherwise dark or shadowed areas where silhouetting would otherwise occur.

Auto D/N switchover Operation Mode
When there is sufficient daylight the TVI range of cameras operate in colour mode. At low light (lux) level the camera automatically switches using the Smart IR functionality to black and white ensuring high quality images over 50m (165ft).

Product Protection
IP66 weather proof vandal resistant aluminium housing.



Specifications

Camera	
Image Sensor	1/3"
Signal System	PAL
Effective Pixels	PAL: 1920 (H) x 1080 (V)
Min. Illumination	0.014 Lux@ (AGC ON) 0 Lux (Infrared Lamps On)
Shutter Speed	PAL: 1/25s ~ 1/50,000s
Lens	2.8 - 12mm Lens, Angle of View: 92° -32°
Day & Night	ICR
Synchronization	Internal Synchronization
Video Frame Rate	PAL 1080p@25fps
S / N Ratio	More than 52dB
HD Video Output	1 Analog HD output
Menu	
Scene	Indoor, Outdoor, Indoor1, LOW-LIGHT
Camera ID	On/Off (15 Characters, position programmable)
AGC	Support
D/N Mode	Colour / BW / EXT
White Balance	ATW, AWC-SET, Indoor, Outdoor, Manual
Privacy Mask	On/Off, Max 8 Zones
Motion Detection	On/Off, Max 4 Zones
BLC	Support
Anti-Flicker	On/Off
Language	English, Japanese, CHN1, CHN2, Korean, German, French, Italian, Spanish, Polish, Russian, Portuguese, Dutch, Turkish, Hebrew and Arabic
Function	Eclipse, DNR, Digital Zoom(62x), Slow shutter, Mirror, Defog, Defect Pixel Correction, SMART D-ZOOM
General	
Working Temperature / Humidity	-20°C ~ 60°C / -4°F ~ 140°F 90% or less (non-condensing)
Power Supply	DC 12V (Not Supplied), 24V AC
Power Consumption	Max. 10W
IR Distance	50m (165ft)
Weather Proof Rating	IP66
Dimensions (without Junction Box)	300.8mm x 100.8mm x 107.6mm (11.8" x 4.0" x 4.2")
Weight (without Junction Box)	700g (1.5lb)

TVI PTZ Dome Camera, 23 x Optical Zoom

Part No. 301025

- 720P Video Output
- 1/3" CMOS Sensor
- IP66 Weather Proof
- True Day/Night DWDR & DNR
- 23 x Optical Zoom, 16 x Digital Zoom
- 3D Intelligent Positioning
- 24VAC Power Supply
- Built-In Fan and Heater



Specifications

Camera

Image Sensor	1/3" CMOS
Effective Pixel	1400K
Max Image Resolution	1280 x 720
Resolution	50Hz: 50fps(1280x720), 25fps(1280x720); 60Hz: 60fps(1280x720), 30fps(1280x720)
Min. Illumination	Colour: 0.05 Lux@F1.6 (AGC On) B/W 0.01 Lux@F1.6 (AGC On)
White Balance	Auto/Manual/ATW/Indoor/Outdoor
AGC	Auto / Manual
S/N Ratio	≥ 50dB
3D DNR	Support
Digital WDR	Support
EIS	Support
Backlight Compensation	Support
Shutter Time	1-1 / 10,000s
Day & Night	IR Cut Filter
Digital Zoom	16x
Privacy Mask	Up to 8 programmable, max 8 zones on same video screen
Focus Mode	Auto / Semiautomatic / Manual

Lens

Focal Length	4 ~ 92mm 23X
Zoom Speed	Approx 4s (Optical Wide-Tele)
Angle of View	49 ~ 2.2 Degree (Wide-Tele)
Min. Working Dist.	10 ~ 1000mm (Wide-Tele)
Aperture Range	F1.6 ~ F3.7

Pan and Tilt

Pan / Tilt Range	Pan range: 360° endless; Tilt range: -2°-90° (Auto Flip)
------------------	----------------------------------------------------------

Pan / Tilt Speed	Pan Manual Speed: 0.1°-160°/s, Pan Preset Speed: 160°/s Tilt Manual Speed: 0.1°-120°/s, Tilt Preset Speed: 120°/s
Proportional Zoom	Rotation speed can be adjusted automatically according to zoom multiples
Number of Preset	256
Patrol	8 patrols, up to 32 presets per patrol
Pattern	4 Patterns with total recording time not less than 10 minutes
Power Off Memory	Support
Park Action	Preset / Patrol / Pattern / Pan / Tilt / Auto Random / Frame / Panorama
PTZ Position Display	On / Off
Preset Freezing	Support
Schedule Task	Preset / Patrol / Pattern / Pan / Tilt / Auto Random / Frame / Panorama

Input / Output

Monitor Output	1 HD TVI Output, 1.0V (P-P) / 75Ω, BNC
RS-485 Interface	Half duplex mode; Pelco-P, Pelco-D protocol
UTC Function	Self adaptive PELCO_C

General

Working Temperature	-30°C ~ 65°C / -22°F ~ 149°F
Power Supply	24 VAC, Max 18W (heater 6W)
Heater	Built-In 6W
Humidity	90% or less
Protection Level	IP66 standard (outdoor dome), TVS 4,000V Lightning protection, surge protection and voltage transient protection
Dimensions	φ179.4 x 239.5mm (7.06" x 9.43" w/o Bracket)
Weight	Approx. 2kg (4.4lb)



TVI PTZ Dome Camera, 23 x Optical Zoom with IR

Part No. 301026

- 950TVL Horizontal Resolution
- 1/3" CMOS Sensor
- IP66 Weather Proof
- True Day/Night DWDR & DNR
- 23 x Optical Zoom, 16 x Digital Zoom
- IR Distance 100m (328ft)
- 3D Intelligent Positioning
- 24VAC Power Supply
- Built-In Fan and Heater



Specifications

Camera

Image Sensor	1/3" CMOS
Effective Pixel	1490K
Horizontal Resolution	950TVL
Signal System	PAL / NTSC
Min. Illumination	Colour: 0.2 Lux@F1.6 (AGC On) B/W 0.02 Lux@F1.6 (AGC On)
White Balance	Auto/Manual/ATW/Indoor/Outdoor
AGC	Auto / Manual
S/N Ratio	≥ 50dB
3D DNR	Support
Digital WDR	Support
EIS	Support
Backlight Compensation	Support
Shutter Time	1-1 / 10,000s
Day & Night	IR Cut Filter
Digital Zoom	16x
Privacy Mask	Up to 8 programmable, max 8 zones on same video screen
Focus Mode	Auto / Semiautomatic / Manual

Lens

Focal Length	4 ~ 92mm 23X
Zoom Speed	Approx 4s (Optical Wide-Tele)
Angle of View	49 ~ 2.2 Degree (Wide-Tele)
Min. Working Dist.	10 ~ 1000mm (Wide-Tele)
Aperture Range	F1.6 ~ F3.7

Pan and Tilt

Pan / Tilt Range	Pan range: 360° endless; Tilt range: -15°-90° (Auto Flip)
Pan / Tilt Speed	Pan Manual Speed: 0.1°-160°/s, Pan Preset Speed: 240°/s Tilt Manual Speed: 0.1°-120°/s, Tilt Preset Speed: 200°/s

Proportional Zoom	Rotation speed can be adjusted automatically according to zoom multiples
Number of Preset	256
Patrol	8 patrols, up to 32 presets per patrol
Pattern	4 Patterns with total recording time not less than 10 minutes
Power Off Memory	Support
Park Action	Preset / Patrol / Pattern / Pan / Tilt / Auto Random / Frame / Panorama
PTZ Position Display	On / Off
Preset Freezing	Support
Schedule Task	Preset / Patrol / Pattern / Pan / Tilt / Auto Random / Frame / Panorama

Infrared

IR Distance	Up to 100m (328ft)
IR Intensity	Automatically adjust depending on the zoom ratio

Input / Output

Monitor Output	1.0V (P-P) / 75Ω, BNC
RS-485 Interface	Half duplex mode; Self-adaptive HIKVISION, Pelco-P, Pelco-D protocol
UTC Function	Self adaptive PELCO_C, HIKVISION_C (need controller)

General

Working Temperature	-30°C ~ 65°C / -22°F ~ 149°F
Power Supply	24 VAC, Max 30W (IR On, Heater On), Max 24W (IR On), Max 15W (IR Off, Heater Off)
Heater	Built-In 20W
Humidity	90% or less
Protection Level	IP66 standard (outdoor dome), TVS 4,000V Lightning protection, surge protection and voltage transient protection
Dimensions	φ220 x 353.4mm (8.66" x 13.91" w/o Bracket)
Weight	Approx. 5.5kg (12.13lb w/o Bracket)





THDR Range

4, 8 or 16 Channel HD-TVI Digital Video Recorder

THDR 4 Part No. 301030
 THDR 8 Part No. 301031
 THDR 16 Part No. 301032

- H.264 & Dual Stream Video Compression Technology
- Support HD-TVI/Analog/IP Camera Triple Hybrid
- Full Channel 1080P@15fps, 720P@25fps Recording
- HDMI and VGA Output up to 1920x1080P Resolution
- Long Transmission Distance over Coax Cable
- Support up to 4, 8 or 16 Ch Synchronous Playback

Smart Search

Never again have to fast forward to find a single incident. Select an area and smart search will only show related footage. Narrow things down to just when the event occurred and eliminate excess searching.

Motion Detection

Mark a specific area that needs extra protection. Any activity in that area can trigger alarm and analytic algorithms to prevent false positives. A simple line can also be drawn and set up as the alarm trigger.

1-Click camera adding

Even cameras on an external PoE switch are easy to install. 1-Click will automatically add new cameras to the THDR. Let the THDR figure out what addresses are free and take care of the IP camera configuration



Featuring P2P Technology

- Easily setup remote viewing via QR code
- Eliminates complicated setup via router



Download the mobile surveillance app



System	THDR 4	THDR 8	THDR 16
Video / Audio Input			
Video Compression	H.264		
Analog and HD-TVI Video Input	4Ch	8Ch	16Ch
IP Input	1Ch (1080p@25fps)	1Ch (1080p@25fps)	2Ch (1080p@25fps)
Audio Compression	G.711u		
Audio Input	1-Ch, RCA (2.0 Vp-p, 1kΩ)	1-Ch, RCA (2.0 Vp-p, 1kΩ)	1-Ch, RCA (2.0 Vp-p, 1kΩ)
2 Way Audio Input	1-Ch, RCA (2.0 Vp-p, 1kΩ)		
Video / Audio Output			
HDMI / VGA Output	1920 x 1080p / 60Hz, 1280 x 1024 / 60Hz, 1280 x 720 / 60Hz, 1024 x 768 / 60Hz		
Encoding Resolution	Main Stream: 1080P (non-real-time) / 720P / VGA / WD1 / 4CIF / CIF Sub Stream: WD1 (non-real-time) / 4CIF (non-real-time) / CIF / QCIF / QVGA		
Frame Rate	Main Stream: 1/16 fps - Real time frame rate Sub Stream: 1/16 fps - Real time frame rate		
Video Bit Rate	32 Kbps - 4 Mbps	32 Kbps - 8 Mbps	32 Kbps - 10 Mbps
Audio Output	1-Ch, RCA (Linear, 1kΩ)	1-Ch, RCA (Linear, 1kΩ)	2-Ch, RCA (Linear, 1kΩ)
Audio Bit Rate	64 Kbps		
Dual-Stream	Support		
Stream Type	Video, Video & Audio		
Playback Resolution	1080P / 720P / VGA / WD1 / 4CIF / QVGA / QCIF		
Synchronous Playback	4-Ch	8-Ch	16-Ch
Network			
Remote Connections	128		
Network Protocols	TCP/IP, PPPoE, DHCP, DNS, DDNS, NTP, SADP, SMTP, SNMP, NFS, iSCSI, UpnP, HTTPS		
Hard Disk			
SATA	1 SATA Interface	1 SATA Interfaces	2 SATA Interfaces for 2xHDD's; 1x eSATA Interface
Capacity	Up to 6TB for each disk		
External Interface			
Network Interface	1:10M / 100M Self-adaptive Ethernet Interface		
Serial Interface	1 RS-485 Serial Interface, Half Duplex		
USB Interface	2 x USB 2.0		3 x USB 2.0
Alarm In / Out	4/1	8/4	16/4
Others			
Power Supply	12V DC	12VDC	100 ~240VAC, 47 ~ 63Hz
Consumption	≤15W	≤20W	≤55W
Working Temperature	-10°C ~ +55°C, 14°F ~ 131°F		
Working Humidity	10% ~ 90%		
Chassis	1U Chassis	19" Rack Mounted 1U Chassis	19" Rack Mounted 1.5U Chassis
Dimensions (W x D x H)	315 x 230 x 45mm (12.4 x 9.1 x 1.8 inch)	315 x 230 x 45mm (12.4 x 9.1 x 1.8 inch)	440 x 280 x 45mm (17.3 x 11 x 1.8 inch)
Weight	≤ 1.5 Kg (3.3lb)	≤ 2 Kg (4.4lb)	≤ 5 Kg (11.0lb)



IP Cameras



A decorative background for the bottom half of the page, featuring a blue and white digital theme with binary code (0s and 1s) and glowing light trails. The background is overlaid with various technical icons and text labels:

- IP66 WEATHERPROOF
- HD VIDEO
- MICRO SD CARD SLOT
- 3.0 Megapixel CAMERA RESOLUTION
- PROGRESSIVE SCAN
- I/O ALARM
- 1/3" 960H CCD
- H.264 CO
- VARIFOCAL
- DIGITAL NOISE REDUCTION
- WIDE DYNAMIC RANGE
- 3D INTELLIGENT POSITIONING
- POWER LOSS RECOVERY
- INFRA RED CUT FILTER REMOVAL
- PAT
- 2.0 Megapixel CAMERA SOLUTION
- AUTO WHITE BALANCE
- COMPLETE

Part No. 301039

- 1.3MP Resolution
- 2.8mm Lens
- HD Real-Time Video
- IP66 Weather Proof
- DWDR & 3D DNR
- Matrix IR Illuminator 30m (100ft)
- Day / Night Auto Switch



Specifications

Camera

Image Sensor	1/3" Sensor
Min. Illumination	0.0028 Lux@F2.0 (AGC On) 0 Lux with IR
Shutter Speed	1/25s ~ 1/100,000s
Lens	2.8mm@F2.0, 1280x960: Angle of View 92.5°
Lens Mount	M12
Day & Night	ICR
Dig. Noise Reduction	3D DNR
Wide Dynamic Range	Digital WDR
Angle Adjustment	Horizontal 0°~360°, Vertical: 0°~75°, Rotation: 0°~360°

Compression Standard

Video Compression	H.264 / MJPEG
Bit Rate	32 Kbps ~ 16 Mbps
Dual Stream	Yes

Image

Max. Image Res	1280 x 960
Frame Rate	60Hz: 30fps (1280 x 960), 30fps (1280 x 720) 50Hz: 25fps (1280 x 960), 25fps (1280 x 720)
Image Settings	Saturation, brightness, contrast adjustable through client software or web browser

Network

Network Storage	NAS (iSCSI Optional)
Alarm Trigger	Motion detection, tampering alarm, network disconnect, IP address conflict, storage exception

Protocols	TCP/IP, HTTP, DHCP, DNS, DDNS, RTP, RTSP, PPPoE, SMTP, NTP, SNMP, HTTPS, FTP, 802.1x, Qos, (SIP, SRTP, IPv6 optional)
System Capability	ONVIF, PSIA, CGI
General Functionalities	Flickerless, Heartbeat, Mirror, User Authentication, Video Mask, Watermark, Reset
Interface	
Communication Interface	1 RJ45 10M / 100M Ethernet Port and 1 RS-485 Interface
General	
Working Temperature / Humidity	-25°C ~ 60°C / -13°F ~ 140°F Humidity 95% or less (non-condensing)
Power Supply	DC 12V ±10%, PoE (802.3af) (Not Supplied)
Power Consumption	Max. 7W
IR Distance	30m (100ft)
Weather Proof Rating	IP66
Dimensions	φ127 x 97.5mm (5 x 3.8")
Weight	670g (1.5lb)

Regular IR - Halo Effect



Matrix IR - No Halo Effect, Longer Distance, Longer Life



Part No. 301040

- 3.0MP (2048 x 1536) High Resolution
- 2.8 - 12mm Lens
- Full HD 1080p Real-Time Video
- IP66 Weather Proof
- DWDR & 3D DNR & BLC
- IR LED's 20m (66ft)
- Onboard Storage (up to 32GB)
- Vandal Proof
- Audio I/O, Alarm I/O



Specifications

Camera	
Image Sensor	1/3" Sensor
Min. Illumination	0.07 Lux@F1.2 (AGC On) 0 Lux with IR
Shutter Speed	1/25s ~ 1/100,000s
Lens	2.8 - 12mm@F1.4, Angle of View 80°~28.7°
Lens Mount	φ14
Auto Iris	DC Drive
Day & Night	ICR
Dig. Noise Reduction	3D DNR
Wide Dynamic Range	Digital WDR
Backlight Comp.	Yes, Zone configurable
Angle Adjustment	Pan 0°~360°, Tile: 0°~75°, Rotation: 0°~360°
Compression Standard	
Video Compression	H.264 / MJPEG
H.264 Compression Profile	Main Profile
Bit Rate	32 Kbps ~ 16 Mbps
Audio Compression	G.711 / G.726
Audio Bit Rate	64Kbps (G.711) / 16Kbps (G.726)
Image	
Max. Image Res	2048 x 1536
Frame Rate	60Hz: 15fps (2048 x 1536), 30fps (1920 x 1080), 30fps (1280 x 720) 50Hz: 12.5fps (2048 x 1536), 25fps (1920 x 1080), 25fps (1280 x 720)
Image Settings	Saturation, brightness, contrast adjustable through client software or web browser

Network	
Network Storage	NAS (iSCSI Optional)
Alarm Trigger	Motion detection, tampering alarm
Protocols	TCP/IP, HTTP, DHCP, DNS, DDNS, RTP, RTSP, PPPoE, SMTP, NTP, SNMP, HTTPS, FTP, 802.1x, Qos, UPnP (SIP, SRTP, IPv6 optional)
System Capability	ONVIF, PSIA, CGI
General Functionalities	Dual Stream, User Authentication, Watermark
Interface	
Communication Interface	1 RJ45 10M / 100M Ethernet Port
On-Board Storage	Built in Micro SD Card Slot, upto 32GB
General	
Working Temperature / Humidity	-30°C ~ 60°C / -22°F ~ 140°F Humidity 95% or less (non-condensing)
Power Supply	DC 12V ±10%, PoE (802.3af) (Not Supplied)
Power Consumption	Max. 5.5W
Impact Protection	IEC60068-2-75Eh, 50J; EN50102, up to IK10
IR Distance	20m (66ft)
Weather Proof Rating	IP66
Dimensions	φ140 x 99.9mm (5.5 x 3.9")
Weight	750g (1.7lb)



Part No. 301038

- 1.3MP Resolution
- HD Real-Time Video
- 4mm Lens
- IP66 Weather Proof
- DWDR & 3D DNR & BLC
- Low Illumination
- 30 IR LED's 30m (100ft)
- True Day / Night



Specifications

Camera	
Image Sensor	1/3" Sensor
Min. Illumination	0.01 Lux@F1.2 (AGC On) 0 Lux with IR 0.028 Lux@F2.0 (AGC On) 0 Lux with IR
Shutter Speed	1/25s ~ 1/100,000s
Lens	4mm@F2.0, Angle of View 45.3°
Lens Mount	M12
Day & Night	ICR with Auto Switch
Dig. Noise Reduction	3D DNR
Compression Standard	
Video Compression	H.264 / MJPEG
H.264 Compression Profile	Main Profile
Bit Rate	32 Kbps ~ 16 Mbps
Image	
Max. Image Res	1280 x 960
Frame Rate	60Hz: 30fps (1280 x 960), 30fps (1280 x 720) 50Hz: 25fps (1280 x 960), 25fps (1280 x 720)
Image Settings	Saturation, brightness, contrast, sharpness adjustable through client software or web browser
BLC	Yes, Zone configurable

Network	
Network Storage	NAS (iSCSI Optional)
Alarm Trigger	Motion detection, tampering alarm, network disconnect, IP address conflict, storage exception.
Protocols	TCP/IP, HTTP, DHCP, DNS, DDNS, RTP, RTSP, PPPoE, SMTP, NTP, SNMP, HTTPS, FTP, 802.1x, Qos, (SIP, SRTP, IPv6 optional)
System Capability	ONVIF, PSIA, CGI
Security	User Authentication, Watermark, Flickerless, Heartbeat, Dual Stream, Mirror
Interface	
Communication Interface	1 RJ45 10M / 100M Ethernet Port
General	
Working Temperature / Humidity	-25°C ~ 60°C / -13°F ~ 140°F Humidity 95% or less (non-condensing)
Power Supply	DC 12V ±10%, PoE (802.3af) (Not Supplied)
Power Consumption	Max. 5W
IR Distance	30m (100ft)
Weather Proof Rating	IP66
Dimensions	φ60.4 x 76.5mm x 138.1mm (2.4" x 3" x 5.4")
Weight	300g (0.66lb)



Part No. 301041

- 3.0MP (2048 x 1536) High Resolution
- Full HD 1080p Real-Time Video
- 2.8 - 12mm Lens
- IP66 Weather Proof
- DWDR & 3D DNR & BLC
- 42 IR LED's 30m (100ft)
- Onboard Storage (up to 32GB)
- Vandal Proof
- Audio I/O, Alarm I/O



Specifications

Camera	
Image Sensor	1/3" Sensor
Min. Illumination	0.07 Lux@F1.2 (AGC On) 0 Lux with IR
Shutter Speed	1/25s ~ 1/100,000s
Lens	2.8 - 12mm@F1.4, Angle of View 98°~30.5°
Auto Iris	DC Drive
Day & Night	ICR
Dig. Noise Reduction	3D DNR
Wide Dynamic Range	Digital WDR
Backlight Comp.	Yes, Zone configurable
Compression Standard	
Video Compression	H.264 / MJPEG
H.264 Compression Profile	Main Profile
Bit Rate	32 Kbps ~ 16 Mbps
Audio Compression	G.711 / G.726
Audio Bit Rate	64Kbps (G.711) / 16Kbps (G.726)
Image	
Max. Image Res	2048 x 1536
Frame Rate	60Hz: 15fps (2048 x 1536), 30fps (1920 x 1080), 30fps (1280 x 720) 50Hz: 12.5fps (2048 x 1536), 25fps (1920 x 1080), 25fps (1280 x 720)
Image Settings	Saturation, brightness, contrast adjustable through client software or web browser

Network	
Network Storage	NAS (iSCSI Optional)
Alarm Trigger	Motion detection, tampering alarm
Protocols	TCP/IP, HTTP, DHCP, DNS, DDNS, RTP, RTSP, PPPoE, SMTP, NTP, SNMP, HTTPS, FTP, 802.1x, Qos, UPnP (SIP, SRTP, IPv6 optional)
System Capability	ONVIF, PSIA, CGI
General Functionalities	Dual Stream, User Authentication, Watermark
Interface	
Communication Interface	1 RJ45 10M / 100M Ethernet Port
On-Board Storage	Built in Micro SD Card Slot, upto 32GB
General	
Working Temperature / Humidity	-30°C ~ 60°C / -22°F ~ 140°F Humidity 95% or less (non-condensing)
Power Supply	DC 12V ±10%, PoE (802.3af) (Not Supplied)
Power Consumption	Max. 5.5W (7.5W with ICR On)
IR Distance	30m (100ft)
Weather Proof Rating	IP66
Dimensions	φ105 x 295.6mm (4.13 x 11.64")
Weight	1200g (2.65lb)



Part No. 301042

- 1080P Full HD Resolution
- 1/2.8" CMOS Sensor
- IP66 Weather Proof
- True Day/Night DWDR & 3D DNR & BLC
- 4.7 - 94mm Lens, 20 x Optical Zoom
- 3D Intelligent Positioning
- 6 IR LED's 100m (330ft)
- 24VAC / High-PoE Power Supply



Specifications

Camera	
Image Sensor	1/2.8" Sensor
Effective Pixel	2230K Pixels
Min. Illumination	Colour: 0.05 Lux@F1.6 (AGC On) B/W 0.01 Lux@F1.6 with IR (AGC On) 0 Lux with IR
White Balance	Auto/Manual/ATW/Indoor/Outdoor/Daylight Lamp/ Sodium Lamp
AGC	Auto / Manual
S/N Ratio	≥ 50dB
Dig. Noise Reduction	3D DNR
Backlight Comp.	Yes
Wide Dynamic Range	128X Digital WDR
Shutter Speed	1 ~ 1/10,000s
Day & Night	IR Cut Filter
Focus Mode	Auto / Semiautomatic / Manual
Lens	
Focal Length	4.7 ~ 94mm 20X
Zoom Speed	Approx 3s (Wide-Tele)
Angle of View	58.3 ~ 3.2 Degree (Wide-Tele)
Min. Working Dist.	10 ~ 1000mm (Wide-Tele)
Aperture Range	F1.6 ~ F3.5
Pan and Tilt	
Pan / Tilt Range	Pan range: 360° endless; Tilt range: -15°-90° (Auto Flip)
Pan / Tilt Speed	Pan Manual Speed: 0.1°-160°/s, Pan Preset Speed: 240°/s Tilt Manual Speed: 0.1°-120°/s, Tilt Preset Speed: 200°/s
Proportional Zoom	Rotation speed can be adjusted automatically according to zoom multiples
Number of Preset	256
Patrol	8 patrols, up to 32 presets per patrol
Power Off Memory	Support
Park Action	Preset / Patrol / Pattern / Pan scan / Tilt scan / Random scan / Frame scan / Panorama scan

Infrared

IR Distance	Up to 100m (330ft)
IR Intensity	Automatically adjust depending on the zoom ratio

Input / Output

Audio Input	Audio input (LINE input), 2 ~ 2.4V[p-p]; Output impedance: 1KΩ, ±10%
Audio Output	Line level impedance 600Ω

Image

Max. Image Resolution	1920 x 1080
Frame Rate	60Hz: 30fps (1920 x 1080), 30fps (1920 x 1080), 30fps (1280 x 720) 50Hz: 12.5fps (2048 x 1536), 25fps (1920 x 1080), 25fps (1280 x 720)
Image Compression	H.264/MPEG4

Network

Ethernet	10Base-T / 100Base-TX, RJ45 Connector
Audio Compression	G.711u / G.711a / G.726
Protocols	IPv4/IPv6, HTTP, HTTPS, 802.1x, Qos, FTP, SMTP, UPnP, SNMP, DNS, DDNS, NTP, RTSP, RTP, TCP, UDP, IGMP, ICMP, DHCP, PPPoE
Simultaneous Live View	Up to 6
Streams	Dual Streams
Mini SD Memory Card	Micro SD Slot up to 32GB
User / Host Level	Up to 32 users, 3 levels: Administrator, Camera Control, Live View Only
Security Measures	User authentication (ID and PW), Host authentica- tion (MAC address), IP address filtering

Integration

Application Programming	Open-ended API, support Onvif, PSIA and CGI
Web Browser	IE7, IE8, IE9, Chrome8+, Firefox 3.5+, Safari5+

General

Working Temperature	-30°C ~ 65°C / -22°F ~ 149°F
Power Supply	24 VAC, High PoE; Max 30W/21W (IR On/Off)
RS-485 Protocols	HIKIVISION, Pelco-P, Pelco-D, Self Adaptive
Humidity	90% or less
Protection Level	IP66, TVS 4,000V Lightning protection, surge protection and voltage transient protection
Dimensions	φ220 x 353.4mm (8.66" x 13.91" w/o Bracket)
Weight	Approx. 5.5kg (12.13lb w/o Bracket)

COLOUR

1/2.8" CMOS

IR LED

DAY & NIGHT

AUTO WHITE BALANCE

BACK LIGHT COMPENSATION

IP66 WEATHERPROOF

HD VIDEO

2.0
Megapixel
CAMERA
RESOLUTION

MICRO SD
CARD SLOT

DUAL STREAM

POWER OVER
ETHERNET

H.264 CODEC

WIDE DYNAMIC
RANGE

DIGITAL NOISE
REDUCTION

I/O ALARM

3D INTELLIGENT
POSITIONING

POWER LOSS
RECOVERY

INFRA RED CUT
FILTER REMOVAL

PATTERNS



Accessories



WD Purple™ Surveillance Hard Drives (use with DVR / THDR)

WD10PURX

WD Purple™ 1TB

Part No. 301057

WD20PURX

WD Purple™ 2TB

Part No. 301058

WD40PURX

WD Purple™ 4TB

Part No. 301059

* Used in conjunction with TVI DVR's only.



Peace of mind

Built for 24/7 always-on, high temperature surveillance systems ensuring reliability and quality video playback when you need it most.

Desktop vs Surveillance storage

WD Purple™ drives are designed to replace standard desktop drives that were not designed for 24/7 always-on surveillance. Desktop drives are built to run for short intervals only and are not engineered to withstand high-temperature fluctuations and equipment vibrations found in typical surveillance applications.

Improve performance

Allframe™ technology works with ATA streaming to reduce error pixilation and video interruptions that occur when desktop hard drives are incorrectly used in storage systems.

Compatibility

Built for compatibility with industry leading chassis and chip set manufacturers for seamless integration.

Supports up to 32 cameras

Optimised to support up to 32 high definition surveillance cameras, providing flexibility to upgrade in the future.

Lower power consumption

Crucial in high temperature, always-on surveillance environments. With IntelliSeek™ technology, WD Purple™ drives calculate the optimum seek speeds which lowers power consumption, noise and vibration that can damage and cause drives to wear out sooner.

Interface: **SATA 6 Gb/s**
 Form Factor: **3.5 inch**

Western Digital, WD and the WD logo are registered trademarks in the U.S and other countries. WD Purple, AllFrame and IntelliSeek are trademarks of Western Digital Technologies Inc. in the U.S and other countries.

3D Controller

PTZ C

3D (Pan / Tilt / Zoom) Controller

Part No. 301060

Enables control of PTZ cameras from a central control area.



Power Extension DC Cable

DC 1x4 Split

Power Extension DC Cable 1 x Female - 4 x Male

Part No. 301071

Splits DC voltage upto 4 cameras on a CCTV system



DC 1x8 Split

Power Extension DC Cable 1 x Female - 8 x Male

Part No. 301072

Splits DC voltage upto 8 cameras on a CCTV system



RG59 + 12VDC Cable

TX5912

RG59 + 12VDC Cable - Black 100m

Part No. 370783



TX5912

RG59 + 12VDC Cable - Black 200m

Part No. 370784

Enables video and voltage to be delivered to a CCTV camera through a twin cable.



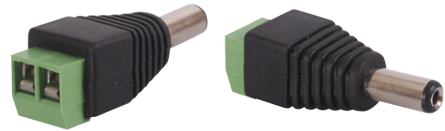
Connectors + Tools

MPP 1

Male Power Plug Screw Terminal

Part No. 301073

Connects to a TX5912 cable. Plugs into CCTV camera to deliver power from source.

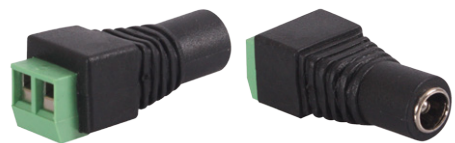


FPP 1

Female Power Plug Screw Terminal

Part No. 301074

Connects to TX5912 cable. Plugs into your power source to deliver power to your CCTV camera.



BNC C1

BNC Compression Connector

Part No. 301075

Professional connector for TX5912 cable to deliver video from your CCTV camera to your DVR.



BNC C2

BNC Crimp Connector

Part No. 301076

Professional connector for TX5912 cable to deliver video from your CCTV camera to your DVR.



CBT 2

BNC Crimp Ratchet Tool

Part No. 301084

Professional crimp ratchet tool for use with BNC C2 crimp connector. (Part No. 301076)



CBT 1

BNC Compression Tool

Part No. 301086

Professional compression tool for use with BNC C1 compression connector. (Part No. 301075)



Converters

VTC C1

CCTV Video RG59 CAT5 Converter Pair

Part No. 301077

Enables CAT cable to be used between CCTV camera and DVR for video.



VAP B1

CCTV Video Audio Power RG59 CAT5 Balun Pair

Part No. 301078

Enables CAT cable to be used between CCTV camera and DVR for video, audio and power.



Power Supplies

PSU 129/9

12VDC 9 Port, 9 AMP PTC Protection

Part No. 301080

Connects upto 9 CCTV cameras
(depending on camera power requirements)



PSU 1218/12

12VDC 18 Port, 12 AMP PTC Protection

Part No. 301081

Connects upto 18 CCTV cameras
(depending on camera power requirements)



PSU 249/8

24VAC 9 Port, 8 AMP

Part No. 301082

Connects upto 9 PTZ CCTV cameras
(depending on camera power requirements)



PSU 125

12VDC, 5 AMP

Part No. 301087

Use with DC 1x4 Split (Part No. 301071) and DC 1x8 Split (Part No. 301072) to provide power for CCTV cameras up to 5 amps.



CCTV Tester / Analyser

T1

Professional CCTV Tester / Analyser (includes carry case)

Part No. 301083

Enables appropriate positioning of CCTV cameras during installation.

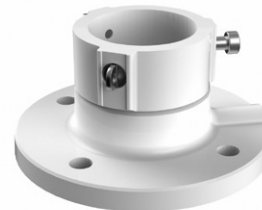


PTZ Mounts

TPTZ MC1

PTZ Ceiling Mount - Suitable for all Triax PTZ Cameras

Part No. 301088



TPTZ CM2

PTZ Corner Mount - Suitable for all Triax PTZ Cameras

Part No. 301089



Miscellaneous

CCTV Warning Sign

457 x 279mm

Part No. 301085



What we mean by...



700 TVL

The number of analogue TV lines you will see on your TV screen (in theory, for PAL systems you will only ever see 576 TV Lines on your TV). The Triax range of analogue CCTV cameras feature 700 TVL.

960 H

Represents the number of horizontal pixels in the CCD image sensor and is the highest resolution available for analogue CCTV. It provides a 30% increase in resolution compared to D1, enabling cameras to obtain resolutions up to 700 TVL and DVRs to capture the images.

960H creates a wide-screen picture by default so the image does not need to be stretched to fit wide-screen TVs and monitors. Since 960H's horizontal resolution is 960 x 480, you're going to get the best results from a 700 TVL camera (a 700 TVL camera has an effective resolution of 976 x 582). The Triax range of analogue CCTV cameras feature 960H sensors.

Addressing

Addressing provides a means of identifying individual items that are located on a network.

AGC

Automatic Gain Control. A circuit that provides a method of keeping a signal at a constant level. Cameras use AGC to keep the video signal level high under low light conditions.

ALC

Automatic Level Control. This is found on auto iris lenses and is a means of 'fine tuning' the sensitivity of the lens. If set to 'peak', bright areas can show more detail and if set to 'average' dark areas will show more detail. The default setting is halfway on most lenses and will suit the majority of installations.

Angle of View

The maximum width of view available from a CCD imager, regardless of the lens fitted. The bigger the CCD imager format, the wider the angle of view.

Aperture

A means of adjusting the amount of light passing through a lens. In the CCTV environment the lens iris is the aperture control method.

Auto Iris

A facility built into lenses to control the amount of light allowed through the lens. The auto iris compensates for differing light levels, allowing the camera picture to be consistent under varying light conditions.

Auto White Balance

This is a facility provided on most colour cameras to adjust white levels relative to other colours.

Back Focus

The position of the imaging device in relation to the focal point of the lens, it is sometimes referred to a "rack focus". When setting up a zoom lens the back focus must be set to allow correct tracking of focus throughout the zoom range.

Bandwidth

The frequency response capability of a device or communications medium. The greater the bandwidth, the larger the capacity of the system i.e. the more information carrying ability the CCTV or network system has.

BLC

Back Light Compensation. A feature found on some cameras that allows it to deal with different lighting levels in the scene of view, such as looking from a dark room into a doorway. BLC enables detail to be seen in otherwise dark or shadowed areas where silhouetting would otherwise occur.

BNC

Used for terminating coaxial cables, the main connector in the CCTV industry.

CCD

Charge Coupled Device. A light sensitive imaging device for almost all cameras. Typical sizes for CCTV cameras: 1/2", 1/3" & 1/4"

CCTV

Closed Circuit Television

Composite Video

A complete video signal, in which the Luminance (brightness) and Chrominance (colour)

Compression

Compression techniques are used in digital CCTV to reduce the file sizes of recorded video images. Typical compression formats used for video are: MJPEG, MPEG-4 & H.264.

Day/Night Camera

A type of camera that can capture video during the day or night. In low light conditions, the sensor may switch from colour to black & white in order to enhance the picture quality.

Digital Noise Reduction

The chip inside your camera is constantly picking up noise from interference and by-products produced by other circuits and electronic components within it. These noise artefacts can translate into images and video as fine static, snow or fuzzy images.

Digital Noise Reduction (DNR) is a method by which the camera's imager digitally removes noise from the image. 3D DNR is an advancement of this technology which enables noise to be filtered even more effectively from the image, even in low light conditions.

Digital Zoom

A facility provided on some video multiplexers and CCTV cameras, which allows the image to be 'zoomed into', the higher the zoom ration the more 'blocky' the image can become.

DSP

Digital Signal Processing. A system supported by some CCTV cameras, which allows intelligent manipulation of the video signal in the camera for features such as backlight compensation.

Dwell

The time period in which a switcher will remain on one camera input before switching to the next in the sequence. It can also refer to the time spent by a device at a preset position when in tour mode.

EI

Electronic Iris. This is a system within CCTV cameras where an electronic shutter is built into the camera. It allows a normal fixed iris lens to be fitted in a wider range of applications. It should not be assumed that EI would negate the need for an auto iris lens.

Ethernet

Ethernet is the most widely utilised network technology. Specified in a standard, IEEE 802.3, Ethernet was originally developed by Xerox and then developed further by Xerox, DEC, and Intel. It is now a popular means of distributing data and / or video.

Sony EXwave/EXview

Are terms relating to an enhanced CCD imager that features improved light gathering techniques, which give improved low light sensitivity, particularly near the IR end of the spectrum.

Field

A field is one half of a complete TV picture and can comprise of all odd lines or all even lines.

Focal Length

This is a distance from the centre of the lens to a point at which images come into focus. The CCD imager is usually set at this point to ensure image clarity. This value is what denotes the angle of view and size of the target image.

Frame

A complete TV picture comprising of two fields, one odd and one even.

Frame Rate

The quality of a Digital Surveillance Systems is often determined by the Total Frame Rate it can record at. The higher the Frame Rate, the higher the quality of recording and the more Real Time your CCTV recording will be - Real Time recording for 1 camera is 25 Frames Per Second (PAL)

F-Stop

In photography, this is a term used to indicate the speed of a lens in terms of exposure. It directly relates to the iris setting of the lens and thus the amount of light allowed through. The smaller the f-stop setting, the more light is allowed through.

H.264

A video codec standard which can achieve high quality video in relatively low bitrates. The Triax Range of DVR's and NVR's use the latest H.264 Compression technology saving valuable space on your HDD during Recording.

HD TVI

HD TVI High Definition Transmit Video Interface - This technology enables a high efficiency of real time HD Transmissions over long distance using standard RG 59 coaxial cable. The technology supports two HD video formats 720p and 1080p.

Infrared

Frequency range within the spectrum of light that is invisible to the human eye. CCTV Illumination is usually designed around the infrared range of 730 – 815 nanometres.

IP rating

A system of rating a piece of equipment against dust and water ingress.

IR LED

Infra-red light emitting diode. Emits infra-red light not visible to the naked eye to provide illumination in low light.

LAN

Local area network, usually within the same building or series of buildings.

Luminance

The brightness element of a video signal.

LUX

Measurement used to express light intensity.

Motion Detection

Recording method for digital surveillance systems. When a subject walks in front of a camera, the pixels change and the DVR defines this as motion. The surveillance system will record these images to the hard disk. This is a popular recording setup since motion recording reduces or eliminates unnecessary recording of unoccupied spaces

MPEG

Motion Picture Experts Group. Standard user for conditional refresh capture and transition of digital video images.

ONVIF

Open Network Video Interface Forum development of a Global Standard for interfacing IP - based physical security products

PAL

Phase Alternating Line. The colour TV system used in the UK, Europe and some other parts Of the world, 625 lines, 50 fields per sec.

Pan

Camera movement on the horizontal plane.

Pixel

Term used for a single picture element. A monitor or TV has a display that comprises millions of pixels; each pixel is illuminated with varying intensity to create the picture display.

Presets

Functionally that is supported by some telemetry equipment.

Position related feedback is provided by the zoom lens and pan/tilt head. Either the telemetry receiver or matrix stores this feedback whenever a position is stored as a preset. The system operator can recall preset positions very quickly with the minimum of key presses.

Privacy zone

A feature present on some CCTV equipment to comply with the data protection act. The feature allows sensitive areas of a PTZ camera's view to be blanked out so that they cannot be viewed.

Protocol

A set of rules that govern how elements of a system inter-communicate.

Quad

Either a 4 way video processing unit or the 4 way screen generated by a video multiplexer.

Resolution

A measurement of the ability of a piece of CCTV equipment or system to display detail. Measured in TV lines.

RS485

2 wire balanced, party line multi-drop data transmission presentation, used in many telemetry and matrix switcher networks. Can run in simplex or half-duplex mode.

Shutter Speed

Electronic circuit found in many CCD cameras which allows the light gathering period of the camera to be manually altered.

Surveillance

The object must fill at least 5% of the frame in order to be distinguishable from other objects. One must be able to distinguish between a person or an object/ overview image of what is happening in an area.

TCP/IP

Transmission control protocol/Internet protocol. Title given to suite of protocols that are used on computer networks, without which the Internet signal would be not possible.

Telemetry

A system that provides camera control via coding. The coding is either sent with the video signal or is transmitted as data via a network.

Terabyte

1024 Gigabytes = 1 Terabyte.

Termination

A method of matching electrical signals to the transmission medium. In the CCTV environment termination is important for the video signals and also any data networks using RS485 or RS422.

Tour / Cruise

Facility provided by some CCTV control systems where a PTZ camera or dome can be programmed to tour between a specified series of presets. It is usually possible to program a dwell time to stay at each preset and also a speed value at which the camera will travel between presents.

Twisted pair

Refers to a generic cable type, originally from the telecommunications industry where internal cable pairs are twisted together equally for the entire cable length. This type of cable is ideal for balanced data transmission.

Vari-focal lens

A CCTV camera lens whose focal length / viewing angle can be manually adjusted to suit the camera view required. Typical Vari-Focal lens lengths are: 2.5mm-10mm, 2.8mm- 12mm, 3.5mm-8mm, 5mm-50mm.

WD1 Resolution

The recording quality from CCTV cameras. CCTV resolution is measured in vertical and horizontal pixel dimensions and is typically limited by the capabilities of both the camera and the recorder. Until recently the best resolution for recording an analogue camera using a DVR was D1 resolution (720x576).

However, the highest analogue resolution now available is referred to as WD1 (Wide D1), which has a resolution of (960x576). WD1 resolution offers a high quality analogue recording using a 16:9 ratio image size. Triax DVR's record in WD1 resolution when used with Triax 960H analogue cameras. The DVR records larger images, providing a greater amount of image detail.

WDR

Wide Dynamic Range allows Analogue Security Cameras to treat different areas in the image individually and apply separate brightness modifications within the same view giving a more balanced lighting effect.



White Balance

White balance basically means colour balance. It is a function which gives the camera a reference to "true white" — it tells the camera what the colour white looks like, so the camera will record it correctly. Since white light is the sum of all other colours, the camera will then display all colours correctly.

Surveillance Solutions



Featuring P2P Technology

- Easily setup remote viewing via QR code
- Eliminates complicated setup via router



www.triax.co.uk
www.triax.co.uk

TRIAX UK

Abergorki Industrial Estate, Treorchy
RCT. CF42 6DL

Tel: 0845 601 0578

e-mail: sales@triax.co.uk

All specification in this catalogue subject to change without notice
Triax Marketing • © 2015 The Triax Group. All rights reserved. Use of this material signifies your agreement to the terms of use.

Your ultimate connection